

WORKSHOP
on
MACHINE LEARNING
TECHNIQUES FOR
RESEARCH IN
ECONOMICS,
COMMERCE AND
MANAGEMENT USING
PYTHON, R AND MATLAB
(online Mode)

Intensive Bootcamp

19 – 23 DECEMBER, 2022

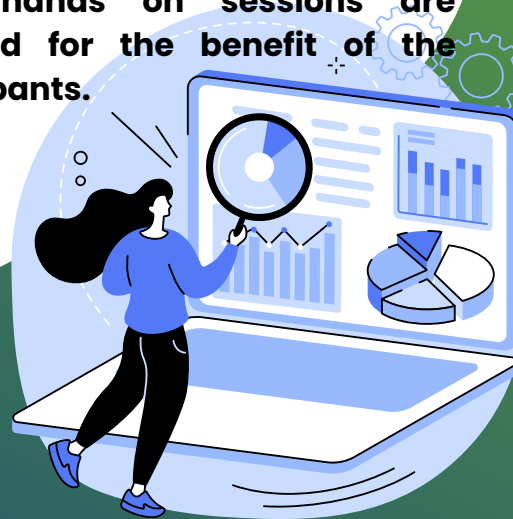
ORGANIZED BY



Department of Humanities and Social
Sciences,
Department of Instrumentation and Control
Engineering &
Department of Architecture

About the course

This workshop will cover all the supervised and unsupervised machine learning techniques used in the field of economics, commerce and management. After the completion of the workshop, the participants will be able to apply the techniques to fulfill their research/academic purposes. The workshop will discuss all the techniques from scratch. Throughout the course, more hands on sessions are included for the benefit of the participants.



TARGET AUDIENCE

- Students (UG & PG)
- Ph.D. Scholars
- Faculty &
- Working professionals

Focal Points

- Introduction to machine learning
- Installation- Python, R and MATLAB/SCILAB
- Regression models in machine Learning
- Linear regression and multiple regression- LAB
- Regression-SVR, DT and RF- Theory & LAB
- Logistic Regression-Theory & LAB
- K-Nearest Neighbour-Theory & LAB
- Support Vector Machine-Theory & LAB
- Bayesian Classifier-Theory & LAB
- Decision tree classification- Theory & LAB
- Random Forest classification- Theory & LAB
- Clustering
- Dimensionality Reduction- Theory & LAB
- Hands on regression techniques
- Hands on classification technique
- Hands on cluster analysis

NIT TRICHY

The National Institute of Technology, Tiruchirappalli was established as a joint venture of the government of India and the government of Tamilnadu in 1964 to bring out world-class engineers. NIT-T has been declared as an institute of national importance by the National Institute of Technology act 2007 by the parliament.

DOHSS-NITT

The Department of Humanities and Social Sciences, since its inception in the year 2004, has catered to independent interdisciplinary research and dynamic collaboration to meet the existing demands of industry, business, public and private organizations and academic services.

ICE-NITT

Department of Instrumentation and Control Engineering was established in the year 1993. The department with its state of the art laboratories, as well as young and dynamic faculty is involved in providing quality education at UG, PG and PhD levels.

DOA-NITT

The Department of Architecture was started in the year 1980. The departments core curriculum is implemented by a team of faculty from varied specializations that include landscape architecture, project planning, city planning and urban development.

COORDINATORS



Dr. R. MURUGESAN, PROFESSOR/HSS



**Dr. K. THIRUMARAN
ASSOC.PROF/ARCHITECTURE**



Dr. N. SIVAKUMARAN, PROFESSOR/ICE



Dr. K. SRINIVASAN/ ASSOC. PROF/ICE

REGISTRATION FEE

Category	Students/Scholars	Faculty/ Working Professionals
Single	₹ 1000	₹ 1500
Group of 3	₹ 2700	₹ 3000
Group of 5	₹ 3400	₹ 4000
Group of 10	₹ 5000	₹ 7500

REGISTRATION & PAYMENT PROCEDURE

- Go to the SBI-collect using the link: [Link](https://www.onlinesbi.sbi/sbicollect/icollecthome.htm)

or click below

<https://www.onlinesbi.sbi/sbicollect/icollecthome.htm>



- Select the state as 'Tamil Nadu', and category as 'Educational Institutions'.
- Select "Conference and Workshop NIT Trichy".
- Select payment category as "HSSRM-MLREC-2022".
- Make payment through UPI/ Net Banking/ Credit card/ NEFT.
- Once the fee is paid, fill up your details and upload the payment receipt in the google form found below

<https://forms.gle/uNWzbKPTUQGR7SgBA>



LAST DATE FOR REGISTRATION

18 December 2022

CONTACT FOR MORE DETAILS

Dr. R. MURUGESAN

9789766155

Mr. V. SHANMUGARAJA

9488513203

409118004@nitt.edu

Ms. MEERA GEORGE

8590882793

409121002@nitt.edu